



*Il Gruppo ABB
e la Sostenibilità*



ABB

Facts about ABB



- ✓ *Headquarters: Zurich, Switzerland*
 - ✓ *About 109,000 employees in around 100 countries*
 - ✓ *Orders in 2006: \$28.4 billion*
 - ✓ *Revenues in 2006: \$24.4 billion*
 - ✓ *Listed on Stockholm, Swiss & New York exchanges; traded on virt-x*
- ✓ *A leading power and automation technology company with strong market positions in its core businesses*
 - ✓ *Core business organized into 5 divisions; Power Products, Power Systems, Automation Products, Process Automation, and Robotics*

Who we are



- ✓ *ABB is a leader in power and automation technologies that enable utility and industry customers to improve their performance while lowering environmental impact*
- ✓ *Our goal is to create value for our stakeholders by meeting the needs of our customers, employees and the communities where we do business*

La nostra missione



Come uno dei principali gruppi di ingegneria a livello mondiale, aiutiamo i nostri clienti ad utilizzare in maniera efficace l'energia elettrica e ad aumentare in maniera sostenibile la loro produttività industriale.

Power and productivity for a better world

Sostenibilità: aree di sviluppo per il 2007



*Continua e sempre più estesa
integrazione nella gestione delle attività*

- ✓ *Formazione innovativa a tutti i livelli su salute e sicurezza*
- ✓ *Programma in corso per la riduzione progressiva dell'uso di energia*
- ✓ *Ulteriore eliminazione di sostanze pericolose*
- ✓ *Rafforzamento dei processi di gestione sociale, ambientale e dei diritti umani*
- ✓ *Rafforzamento della gestione della Security, delle crisi e pianificazione preventiva di eventi pandemici*
- ✓ *Collaborazione con organizzazioni quali World Business Council for Sustainable Development, UN Global Compact, Business Leaders Initiative on Human Rights*
- ✓ *Estensione del programma Access to Electricity (India e Tanzania)*

La Sostenibilità al lavoro: HVDC

La tecnologia HVDC (High-Voltage Direct Current – alta tensione in corrente continua) trasmette grandi quantitativi di energia in maniera efficiente, sicura e con perdite minime

- v Economico (trasmissione efficiente su lunghe distanze)*
- v Tracce minime, sotterranee o sottomarine, con basso impatto visivo*
- v Riduzione delle perdite energetiche, maggiore capacità di incontrare le esigenze dei clienti*



Un sistema di trasmissione di energia che risparmia energia, riduce i costi del cliente, riduce drasticamente le emissioni e limita l'impatto ambientale.

La Sostenibilità al lavoro: azionamenti a velocità variabile

Gli azionamenti controllano i motori alla velocità ad essi necessaria per funzionare con la massima efficienza

- ✓ *La base installata di ABB riduce le emissioni di CO₂ in tutto il mondo di 100 milioni di tonnellate all'anno*
- ✓ *L'efficienza energetica comporta un risparmio di costi per i clienti*



ABB è il fornitore numero uno nel campo degli azionamenti a velocità variabile e produce la più ampia gamma di azionamenti al mondo.

La Sostenibilità al lavoro: risparmio energetico in Svezia

Il porto di Gothenburg è il primo in Europa dove le imbarcazioni ormeggiate ricevono energia elettrica via cavo dalla terra ferma

- ✓ *La nostra tecnologia è stata fondamentale per il progetto*
- ✓ *Emissioni ridotte (sono state risparmiate 80 tonnellate di ossido di azoto e 60 tonnellate di diossido di zolfo) generando energia elettrica sulla terra ferma anziché a bordo*
- ✓ *Vincitore del Premio EU Clean Marine*



La tecnologia applicata in modo innovativo porta ad una maggiore riduzione delle emissioni pericolose.

Programma “Access to Electricity”

v *Origine*

- v *Questo programma è la risposta di ABB al Global Compact delle Nazioni Unite*

v *Obiettivi*

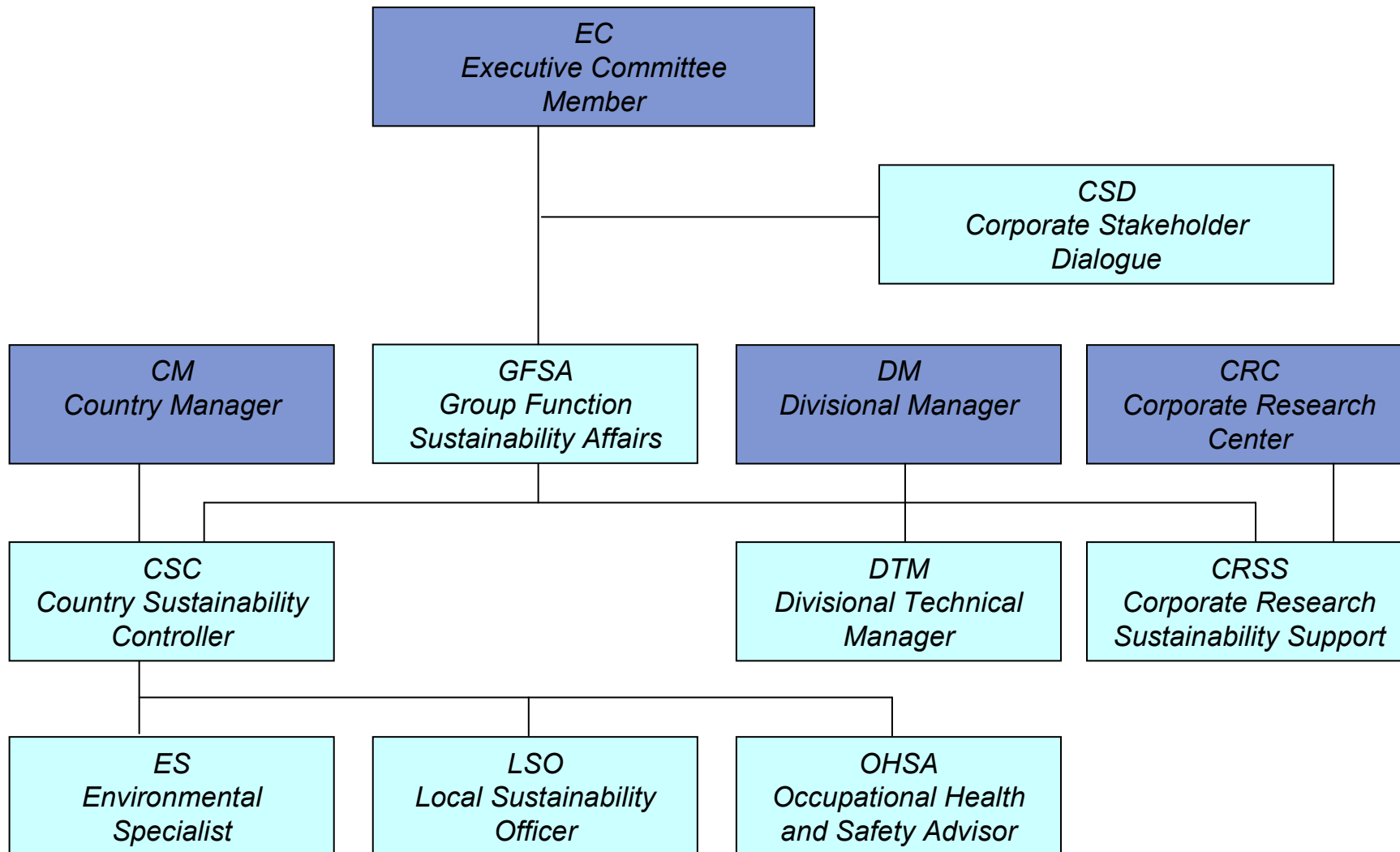
- v *Fornire l’accesso all’energia elettrica nelle aree urbane e semi-urbane più bisognose*
- v *Stimolare la crescita locale e regionale mediante l’utilizzo produttivo dell’energia disponibile*
- v *Assicurare uno sviluppo sostenibile delle comunità*

v *Approccio*

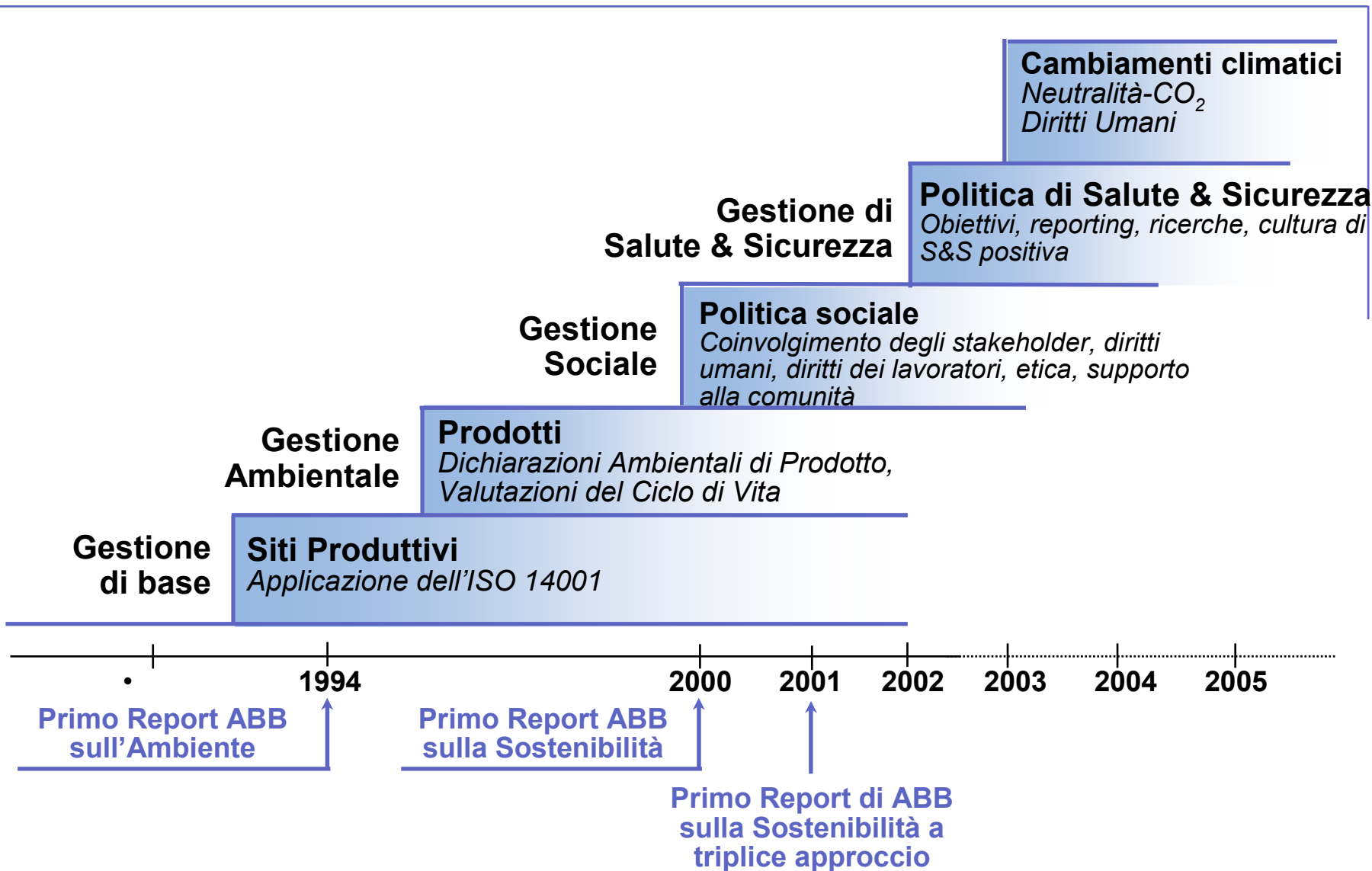
- ♣ *Basato sulle competenze e sui valori principali*
- ♣ *Lavorare in partnership con i clienti, le istituzioni multilaterali e gli altri stakeholder*
- ♣ *ABB si impegna in attività con finanziamenti esterni*
- ♣ *Allineare gli sforzi della CSR (Responsabilità Sociale d’Impresa) con le nostre competenze principali*



ABB Sustainability Affairs Organization



Il percorso di ABB verso la Sostenibilità



Risultati di rilievo in Italia



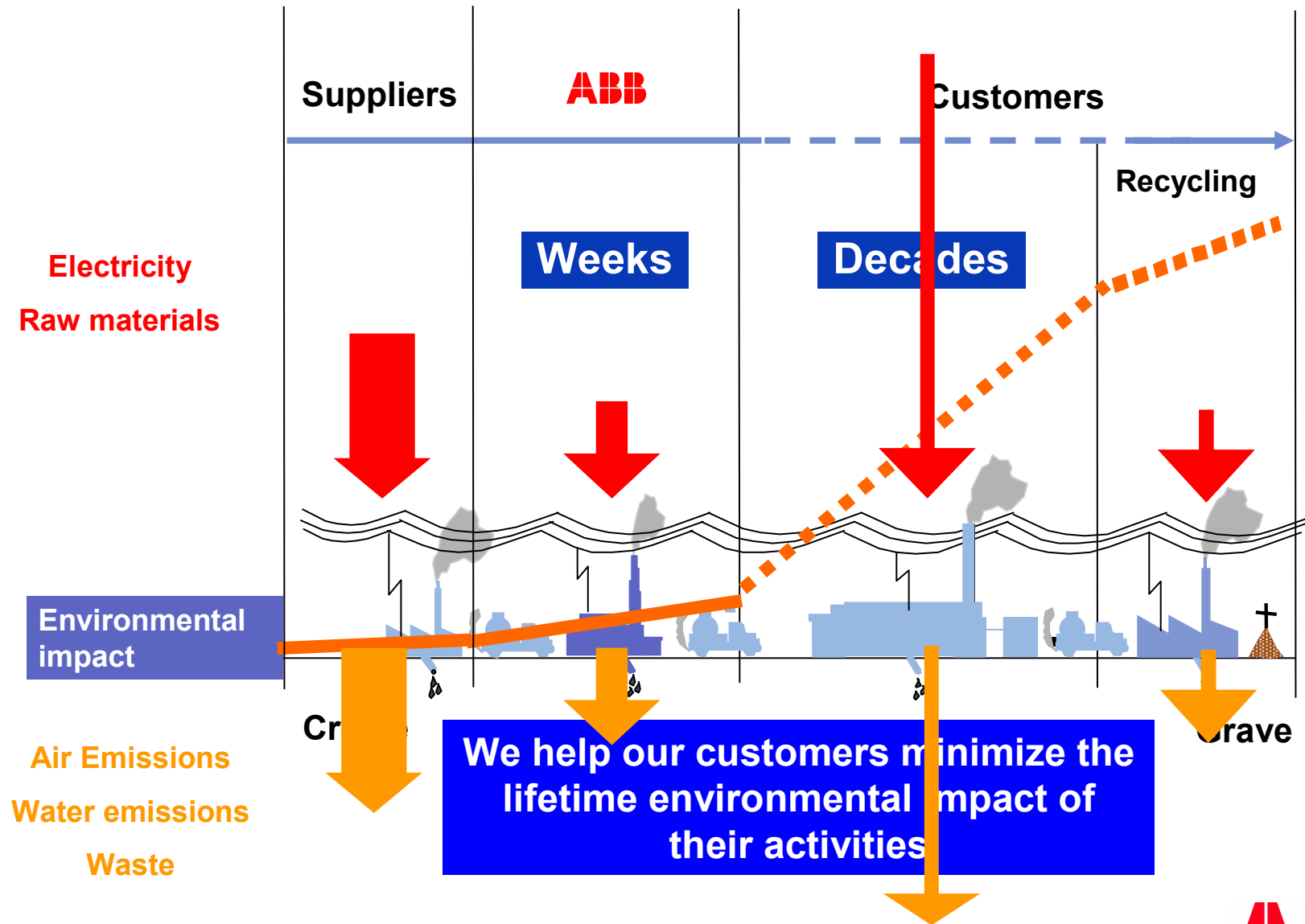
1995 – Prima certificazione ambientale (BS7750 / ISO 14001)

1998 – Prima certificazione ISO 14040

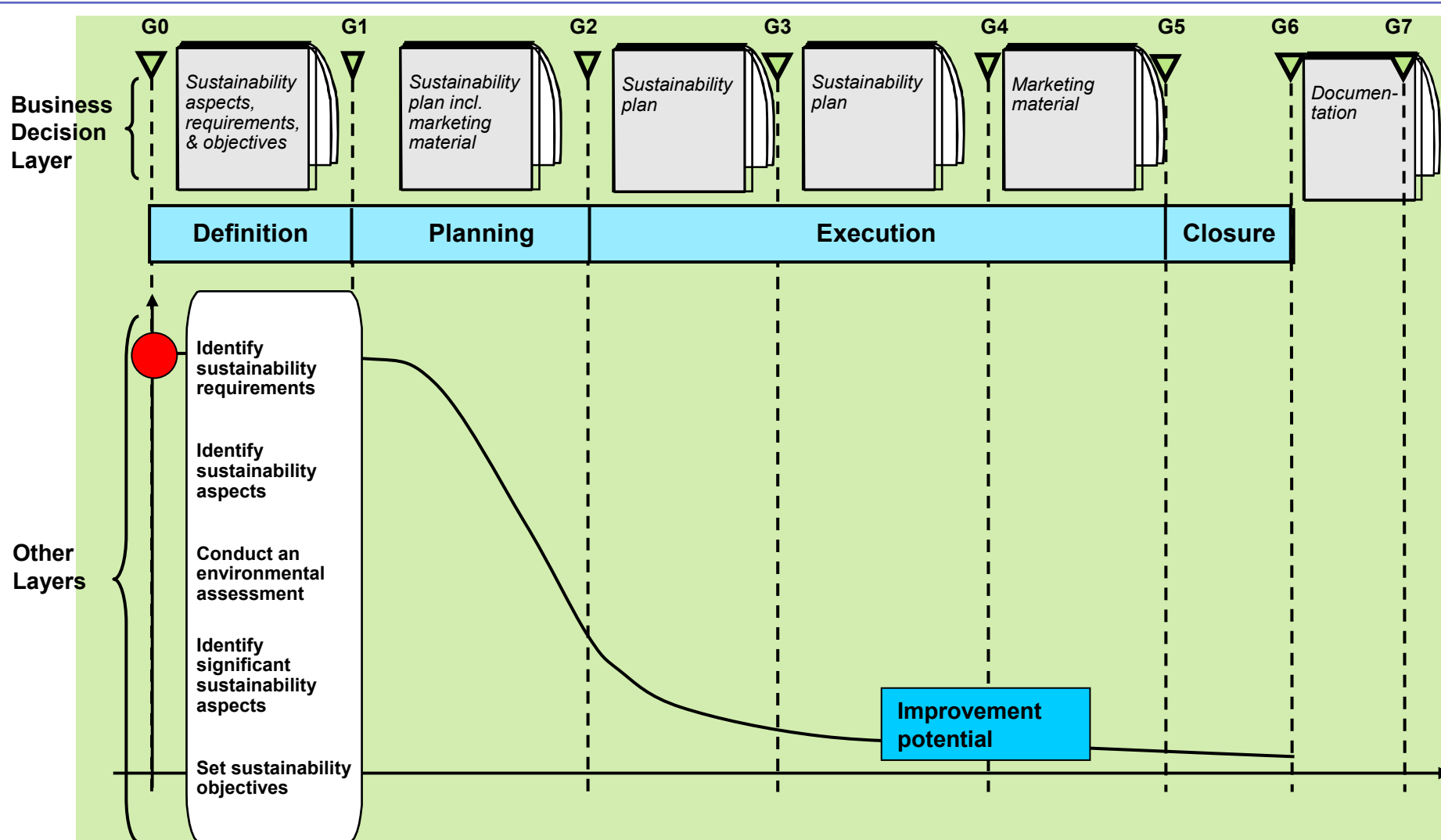
2001 – Prima certificazione ISO 14025 (EPD)

2003 – Prima certificazione SA8000

Approccio LCA



Gate Model



Intranet Toolbox site

ABB ? | | | | |

ABB Group Divisions Business guide Countries Monday November 7, 2005

Sustainability toolbox

- ABB Policies
- Environmental Product Declaration, EPD
- EU directives
- Green House Gas management
- Life Cycle Assessment, LCA
- Life Cycle Cost, LCC
- Logistics
- Marketing
- Material selection
- Product development
- Production
- Publications
- Restricted substances
- Supply management

ABBs Sustainability toolbox

Toolbox with the aim to support the development of eco-efficient products and to provide guidance for marketing information.

APPLICATION AREAS

| | |
|--|---|
| <p>Logistics</p> <p>Environmental aspects in logistics through the use of transport calculation</p> | <p>Marketing & sales</p> <p>Environmental information in marketing & sales</p> |
| <p>Product development</p> <p>Environmental aspects in development projects through use of the GATE model</p> | <p>Production</p> <p>Environmental aspects in ABBs production and construction sites</p> |
| <p>Supply management</p> <p>Sustainability aspects for purchasing</p> | |

TOOLS & INFORMATION

| | |
|---|--|
| <p>ABB Policies</p> <p>Environmental and Social Policy</p> | <p>Environmental Product Declaration, EPD</p> <p>EPD, an LCA based communication tool</p> |
| <p>EU directives</p> <p>Information about ABB relevant EU directives</p> | <p>Green House Gas management</p> <p>Actions for stabilizing the GHG emissions (mainly CO2)</p> |
| <p>Life Cycle Assessment, LCA</p> <p>LCA for calculating the environmental impact of a products life cycle</p> | <p>Life Cycle Cost, LCC</p> <p>LCC for calculating life cycle cost for products</p> |

SEARCH

CONTACT US

Page information:
Lennart Swanstrom

CURRENT DOWNLOADS

- ABBs restricted list
- RoHS & WEEE status Q3 2005

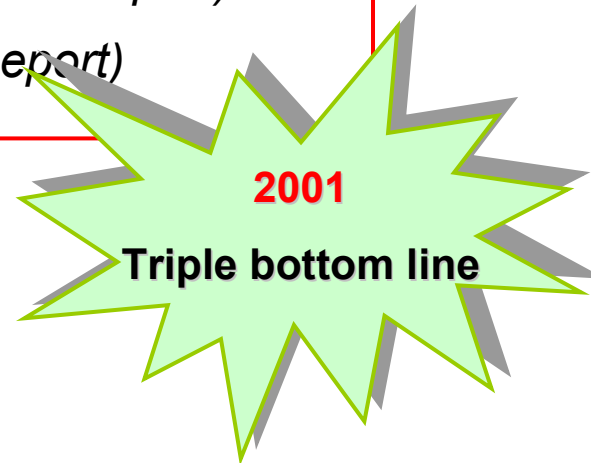
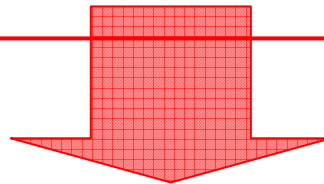
QUICK REFERENCE GUIDES

- LCA, Life Cycle Assessment
- EPD, Environmental Product Declaration
- Environmental assessment in product development
- Restricted list and material selection

Comunicazione delle prestazioni dell'azienda

Aspetti da comunicare

- ✓ *Dati economici*
- ✓ *Ambientali (1994 – Environmental Report)*
- ✓ *Sociali (2000 – Sustainability Report)*



- ✓ *Investitori*
- ✓ *Azionisti*
- ✓ *Autorità ed ONG*
- ✓ *...*

Annual review

Economic performance

In 2001 based on Asada for ABB officers across Value-It allow our card These p end of t rat deb reduce in terms in 2001. Our ord by three gurnth flow fro the year attribut CO2S re and pro use of a These c insulati Engine mid-10 \$470M to covr Engine the end rior of those if

ABB's economic performance in 2001

| Indicator | 2001 | 2000 | 2000 target |
|--|--------|-------------|---------------|
| Annual revenue growth (local currencies) | 4% | 4-6% | 1-2% |
| Probability of 2001 as a record year (revenue) | 93-40% | by end 2000 | (at end 2000) |
| Total debt reduction | 2,000 | 2,000 | 2,000 |
| Annual cost savings | 200 | 200 | 200 |
| CO2S reduction | 12,000 | 12,000 | 12,000 |

Overview
ABB is on track in terms of its operations and financing, after a demanding year in 2001. We are in a solid financial position and will meet our business objectives. Earlier this year we obtained a \$3 billion credit facility commitment from leading banks, which assures greater flexibility and eases concerns about our liquidity. We also launched convertible and straight bond issues strengthening our position.

The company began the largest transformation in its history in 2001. We have realigned all business activities around customer groups and simplified our organization in all markets.

We sharply reduced the number of operating companies, and to further reduce costs, we implemented a program to increase efficiency and productivity with the aim of cutting our workforce by 12,000 by end-2002. We are on track to achieve our targets.

For 2002, revenues are expected to be flat in comparison to 2001. EBIT margin for the full year 2002 is expected to be in the range of 4-5 percent. EBIT and net cash from operations are expected to be stronger in the second half of 2002 than in the first half.

Environmental performance

Overview
We expanded the scope of reporting in 2001. The activities of approval employees, comprise Those parts of ABB's reporting system has respects. However, principles of ISO 14000. The increase in scope and acquisitions during year-on-year comparison. We are pleased to have employee was out to our target.

For the first time, we transportation. The mode of transport facilities are now talk for road transport.

At the end of this year, incidents and accidents reported in 2001. An environmental impact all local environments to learn from our mistakes and prevent a recurrence.

Social performance

Overview
Throughout the year, ABB has focused strongly on its social policy, launched in February. Under the supervision of a steering group, consisting of the "owners" of the 13 principles of the policy (the heads of the respective Group Functions - Human Resources, Corporate Communications, Sustainability Affairs, Supply Management and Legal and Compliance), ABB has laid the foundations for implementing the policy and producing guidelines and indicators to measure performance.

The company's country sustainability controllers will coordinate implementation. We are conducting a series of regional meetings to appraise and train the company's controllers in their role.

In addition, ABB's country communication managers, supported by our sustainability controllers, have conducted 45 stakeholder dialogue sessions in 34 countries to get feedback on the scope of the social policy and on our plans for its implementation (see pages 28-31).

Last year, ABB reported social performance for the first time, with just three indicators covering occupational health and safety. This year health and safety has been extended to cover commuting and business travel.

ABB has also introduced several new social indicators - including some suggested by the Global Reporting Initiative (GRI). In some cases we report a range of figures for different countries or regions or make additional explanatory comments.

Evidence of employee orientation to organizational vision
ABB's organizational vision is set out in the document "ABB's Mission and Values" published in 23 languages and on ABB's Web site. This was first published when ABB was created in 1988 and is now in its third revision.

An introduction to ABB's Mission and Values is part of the induction course for all new employees. All employees attend regular refresher courses, seminars and self-testing sessions, to spread on local levels. We therefore believe that ABB has attained a high degree of employee orientation to its organizational vision, although we cannot quantify this at present.

Ranking of ABB as an employer in internal and external surveys
ABB was ranked as an employer of choice in surveys during 2001 in nine countries (out of 41 countries sampled): Brazil, Denmark, Egypt, Finland, Ireland, South Africa, Sweden, Switzerland and the U.K. In the remaining 32 countries, no applicable ranking surveys were reported.

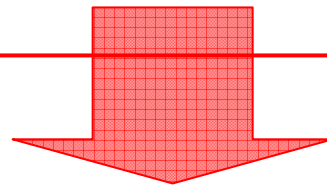
The image shows the cover of the ABB Sustainability Report 2001. It features a photograph of several people in a meeting setting. Overlaid on the cover are three overlapping circles: a red circle labeled 'Economic', a blue circle labeled 'Environmental', and a yellow circle labeled 'Social'. The ABB logo is visible at the top of the cover.



Comunicazione delle prestazioni dei prodotti

Aspetti da comunicare

- ✓ *Tecnici*
- ✓ *Economici*
- ✓ *Ambientali*
- ✓ *Sociali*



- ✓ *Clienti / utenti*
- ✓ *ONG*
- ✓ *Altri stakeholder*

Dichiarazioni ambientali di prodotto



EPD®

EPD I – ANPA -1

ABB