

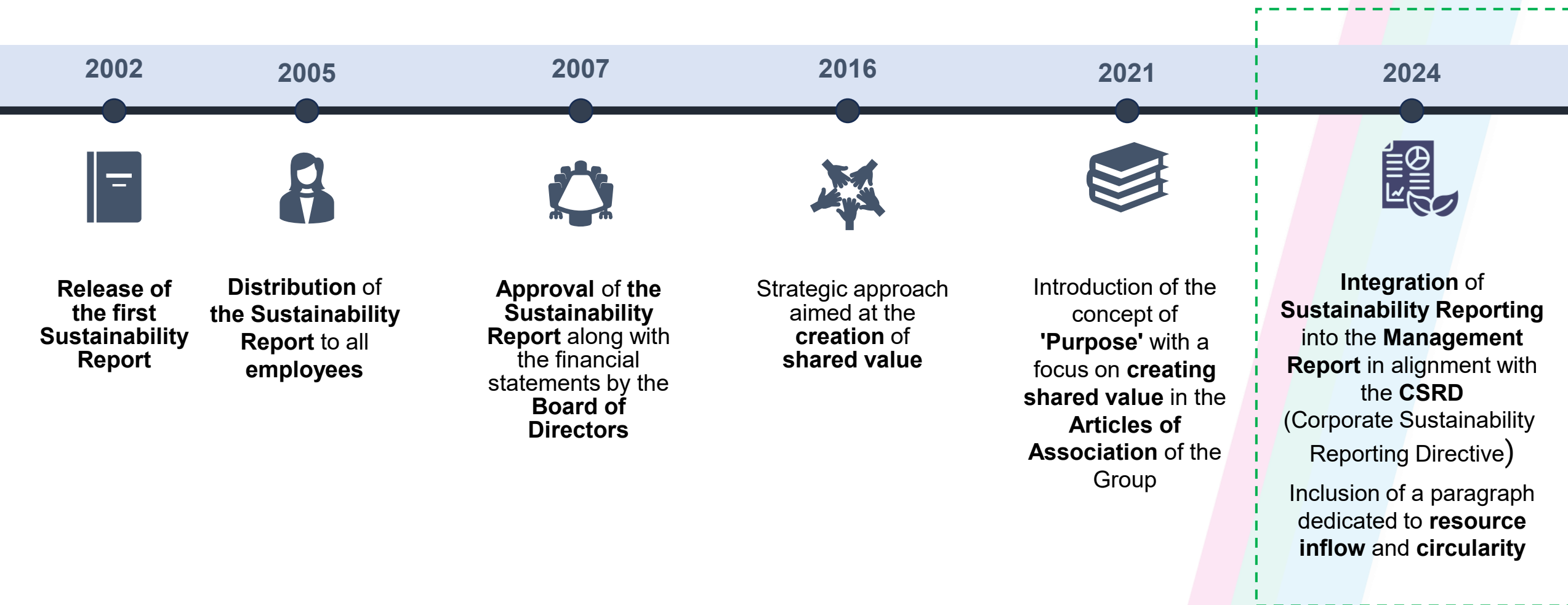
Survey on resource use and circularity - *Suppliers of goods* – Guide for the compilation of the Survey

December 2025

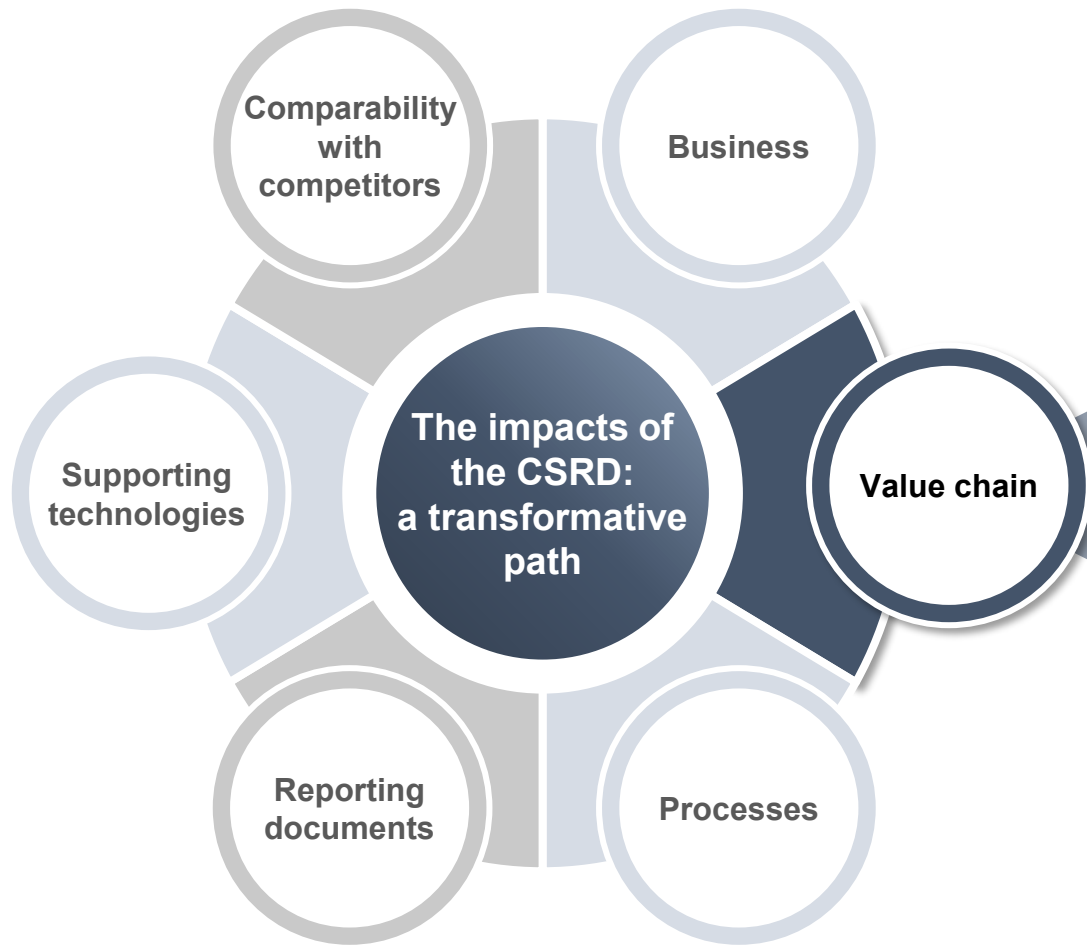
Agenda

- **Hera Group – Adoption of CSRD**
- Key definitions
- Compilation Guide
- FAQ and support
- Appendix - Tables of Association for Commodity Groups - Clusters

Hera - Sustainability reporting as an essential tool for improvement



CSRD - Impacts on the value chain

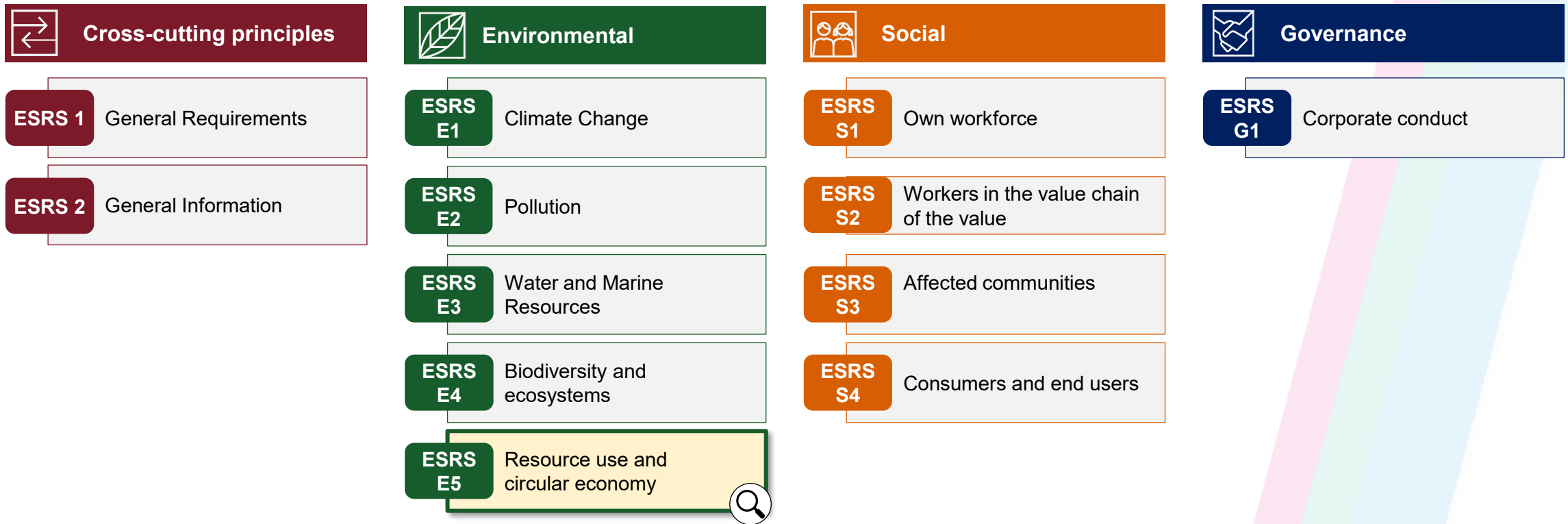


Value chain

It is essential to consider the **impacts** caused by the company, as well as the **risks** and **opportunities** for its business that arise throughout **the entire value chain**, extending beyond just its own operations.

CSRD - Reporting standards

Set of the 12 European Sustainability Reporting Standard (ESRS) for reporting – EFRAG¹



Note: 1) European Financial Reporting Advisory Group (EFRAG)
Source: EFRAG

Hera – Enhancement of the reporting framework



Engaging suppliers through a targeted survey to gather data required for the CSRD reporting of the applicable year, focusing on "Resource use and circular economy."

Agenda

- Hera Group – Adoption of CSRD
- **Key definitions**
- Compilation Guide
- FAQ and support
- Appendix - Tables of Association for Commodity Groups - Clusters

Specification of the KPIs to be measured

Three KPIs on resource use and circularity



Total weight of products and materials used
(sum of **technical** and **biological materials**)



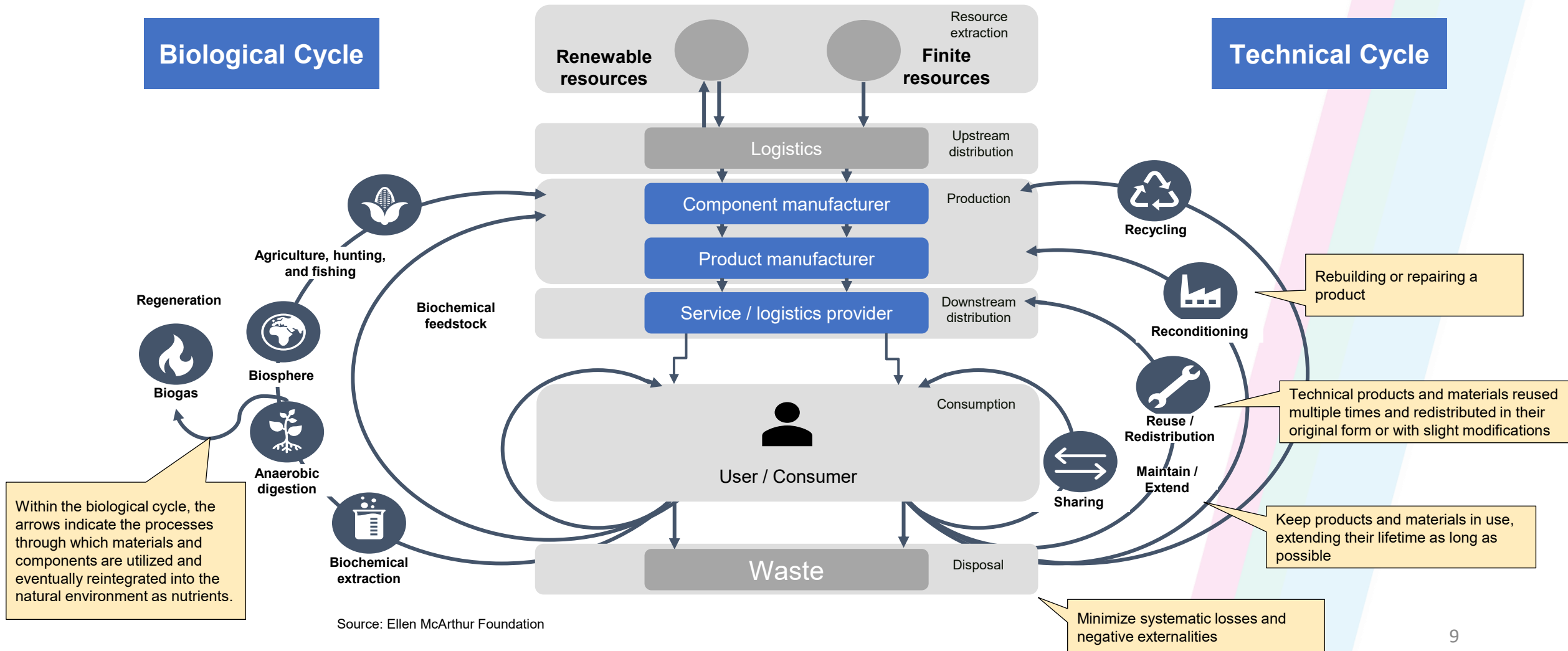
Percentage of **biological materials** and **biofuels** used for non-energy purposes from a **sustainable supply chain** relative to the total weight



Percentage of **recycled materials** and/or reused **components** relative to total weight

Note: The Group has established a methodology to calculate the KPIs mandated by the "ESRS E5-4: incoming resource flows" standard to determine the three KPIs.

Biological and technical materials



Biological and technical materials

Biological material refers to substances that can **safely return** to the natural **environment** after undergoing one or more usage cycles, during which they biodegrade over time.

It is important to understand that the term **biological material** applies to the **materials** used in creating product components, rather than the components themselves. For instance, if a device contains parts made from bioplastic, which is classified as a biological material, the weight of those parts would be considered part of the "biological material" category.

Examples of biological materials include **bioplastics**, **wood**, **paper**, **cardboard**, **natural rubber**, and **masterbatch made from biodegradable polymers**.

Technical material, on the other hand, encompasses all materials that do not fit into the "biological materials" category. These materials can be **reused** or **physically** or **chemically transformed** after use, but cannot be broken down by biological processes to safely re-enter the natural environment.

Technical materials include **minerals**, **metals** (such as copper cables, aluminum parts, steel pipes, cast iron components), **inert substances** (like sand, gravel, crushed stone, soil), **electronic parts**, **ceramics**, **glass**, **plastics** (excluding bioplastics), **fuels** (excluding biofuels), and **synthetic chemicals**.

Biofuels

Biofuels: fuels produced from **renewable resources**, including crops and biomass.

Examples of biofuels include:

- **biofuels made from food and forage crops** (such as **biodiesel** produced from rapeseed oil, sunflower oil, palm oil, and soybean oil; **bioethanol** produced from corn, wheat, sugar beet, barley, and rye);
- **advanced biofuels obtained from waste, residues, and by-products** (for instance, biofuels derived from algae, urban waste biomass, straw, lignocellulosic materials, and similar sources);
- **biofuels sourced from waste, residues, and by-products;**
- **biofuels produced from used cooking oils and animal fats unsuitable for food or animal feed.**

Sustainable supply chain certifications

- **ISCC PLUS (International Sustainability & Carbon Certification):** traceability and verification of the sustainability of raw materials, intermediate products, and final products in the production chains of food products, feed, technical/chemical products, bio-based products, biomass production chains for energy applications, products with recycled content
- **FSC - Chain of Custody (Forest Stewardship Council):** traceability of materials coming from well-managed forests, controlled sources, recovered materials or a combination of these sources (e.g., responsible sourcing of wood or paper used for products)
- **OK biobased - TUV Austria:** certification for products made with renewable raw materials, used for products made with bioplastics and/or materials of natural origin
- **PEFC (Programme for the Endorsement of Forest Certification):** certification attesting to the sustainable management of forests and traceability of forest products from sustainably managed forests to the final product (monitoring every stage of the supply chain through independent audits to exclude non-sustainable sources)
- **Cradle to Cradle Certification:** traceability and verification of the safety and circularity of materials and products based on five sustainability performance categories (material safety; product circularity; positive environmental impact and renewable energy; water and soil management; respect for human rights)

Recycled and reused materials and components

Recycled components or materials: These are components or materials derived from the **processing** and/or **conversion** of **waste**, whether from domestic, commercial, or industrial sources, intended to be transformed into a **final product** or a **component** that will be incorporated into a product.

Materials and waste produced during manufacturing that can be reintroduced into the same process are not classified as recycled components or materials, since they may originate from virgin raw materials and not have undergone any recycling treatment or conversion. For instance, steel waste and scraps recovered during production and reused in the final product are not considered recycled, because there is no guarantee that the original sheet metal semi-finished product was made from recycled steel. Therefore, only the percentage of recycled steel in the original sheet metal semi-finished product should be considered.

Reused components or materials: These refer to components or materials that are **directly reused** by incorporating them into a **final product** or a **component** to be part of a final product, thereby **avoiding** their **conversion into waste** (for example, a glass bottle reused from a «returnable» system of a previously used bottle).

Life Cycle Assessment (LCA) and Environmental Product Declaration (EPD)

Life Cycle Assessment (LCA): is a systematic and standardized approach (ISO 14040/44) that:

- Quantitatively assesses the inputs (such as energy and materials) and outputs (including emissions and waste) of a product, process, or service across **all phases of its life cycle**: from raw material extraction and production to distribution, use, and disposal.
- Helps identify **key environmental impact areas**
- Supports comparisons and informed decision-making to reduce overall environmental effects

This method provides a thorough evaluation by taking a life cycle viewpoint and covering a **broad spectrum of environmental impacts**, such as climate change and resource depletion.

Environmental Product Declaration (EPD): Environmental Product **Declarations** (EPDs) are **standardized documents** that report quantified environmental information tied to the life cycle of products (and services), enabling comparisons among products with similar functions.

EPDs rely on **independently verified LCA data**, making them a valuable tool for decisions based on the environmental impacts throughout a product's life cycle. They allow for comparisons through **Product Category Rules (PCR)**, which specify product-specific requirements for data gathering, calculation methods, and result presentation aligned with the LCA framework.

EPDs are created following international standards such as ISO 14025. The Uni EN 15804:2019 standard serves as a PCR at the European level for developing EPDs specifically in the construction industry.

Agenda

- Hera Group – Adoption of CSRD
- Key definitions
- **Compilation Guide**
- FAQ and support
- Appendix - Tables of Association for Commodity Groups - Clusters

Survey structure and data scope

The survey is structured into 4 areas:

Products and materials supplied

- Specify the **quantities of products*** supplied (kilograms of product excluding packaging) and provide a description of **specific products**.
- For **primary materials** in each product, specify the **quantities** (in kilograms) and the proportions of **biological material** and **recycled /reused content** when applicable.
- **Do not include in the report:**
 - **materials and products provided by Gruppo Hera**
 - **fuels and biofuels** used for **energy generation** and **product transportation**
 - **materials and fuels** utilized during the **production process**

** Products have been categorized into clusters for the purpose of reporting.*

Packaging

- Specify the **weight** of the packaging utilized for supply, along with the corresponding **percentages of material** or biological content **and** recycled or reused components (if applicable).
- Identify the **main material** that constitutes the packaging.
- **Do not include** in the **reporting** any **returnable packaging that is collected by the supplier**.

Additional information

- Include **further details** about **recycled/reused** and **biological** components, along with the associated **estimation methodologies**, regulatory **requirements, constraints**, certification systems, and attach relevant certifications for recycled materials.
- Offer examples of **end-of-life programs** for products and/or packaging, **circular economy initiatives**, as well as decarbonization and/or energy efficiency measures adopted during the production process.

GHG emissions

- State whether a **Life Cycle Assessment (LCA)** and/or an **Environmental Product Declaration (EPD)** is available for the product.
- Identify which **products** have these analyses and provide **comprehensive details** such as the type of assessment conducted, carbon footprint data, and a link to the full analysis.

Scope data

Only the **goods supplied in the year 2025 to the following Hera Group companies are subject to reporting:** Hera Spa, Inrete Distribuzione Energia, Heratech, HerAcquaModena, Herambiente, Frullo Energia Ambiente, Herambiente Servizi Industriali, ACR Reggiani, HestAmbiente, Uniflotte, AcegasApsAmga, Hera Servizi Energia, Hera Luce, Hera Comm, Estenergy, Fratelli Franchini, Marche Multiservizi, Herabit

Example of key questions from the survey – Products and materials supplied

PARAMETER	DESCRIPTION
Total supply - Weight	Enter the total weight in kilograms (kg) of the product supplied to the Hera Group belonging to the selected type
Total supply - Type	Briefly describe and/or list the products supplied belonging to the selected type
Steel - Weight	Enter the weight in kilograms (kg) of the steel present in the supply
Steel - % recycled material	Enter the percentage of recycled/reused steel on the total steel indicated in the previous question
Plastic materials - Weight	Enter the weight in kilograms (kg) of plastic materials - including bioplastics - present in the supply
Plastic materials - % recycled material	Enter the percentage of recycled/reused plastic materials - including bioplastics possibly derived from recycling - on the total plastic materials indicated in the previous question
Plastic materials - % biological material	Enter the percentage of bioplastics on the total plastic materials
Plastic materials - % biological material from sustainable supply chain over total biological	Enter the percentage of bioplastics from a sustainable supply chain over the total bioplastics indicated in the previous question
Plastic materials – Certification of sustainable supply chain for biological material	Indicate the certification of bioplastics from a sustainable supply chain
Plastic materials – Attachment for sustainable supply chain of biological material	Attach the certification of origin from a sustainable supply chain, if available

For each product cluster, specific questions are provided about the main materials of interest. This is just an example, not exhaustive. Any other materials present in the supply should be accounted for under “Other material”

Example of key questions from the survey – Packaging

PARAMETER	DESCRIPTION
<i>Packaging – Weight</i>	Enter the weight in kilograms (kg) of the packaging used for the supply of products (excluding packaging "returnable" withdrawn by the supplier)
<i>Packaging – % recycled material</i>	Enter the percentage of packaging made from recycled/reused materials/components
<i>Packaging – % biological material</i>	Enter the percentage of packaging made from biologically sourced material
<i>Packaging – % biological material from sustainable supply chain on total biological</i>	Enter the percentage of biological material from a sustainable supply chain on the total biological material present in the packaging
<i>Packaging – Certification of sustainable supply chain biological material</i>	Indicate the certification of biological material sourced from a sustainable supply chain
<i>Packaging – Attachments</i>	Attach the certifications for biological and recycled materials used in packaging, if available
<i>Packaging – Notes</i>	Use this space for any notes regarding: 1) Description of recycled or reused components and the methodology for estimating the percentage of recycled/reused material; 2) Any regulatory or technical constraints on the use of recycled material; 3) Methodology for estimating the percentage of biological material; 4) Details of the certification system supporting the provided data; 5) Any other notes to report
<i>Packaging – Predominant Material</i>	Select the predominant material - in terms of kilograms - present in the packaging from the dropdown menu [paper, plastic materials, wood, steel, other material]

The questions about packaging are transversal and identical for all types of products

Example of key questions in the survey – Additional information

PARAMETER	DESCRIPTION
<i>Additional information - Notes</i>	Use this space for any notes regarding: 1) Description of recycled or reused components and the methodology for estimating the percentage of recycled/reused material; 2) Any regulatory or technical constraints on the use of recycled material; 3) Methodology for estimating the percentage of biological material; 4) Details of the certification system supporting the provided data; 5) Any other notes to be reported
<i>Additional information – Attachments</i>	Attach certifications for recycled materials present in the products (e.g., recycled steel certification), if available
<i>Additional information - End-of-life initiatives</i>	Describe any examples of end-of-life initiatives for supplied products or packaging (for example, reuse or total or partial recovery, regeneration of damaged products, etc.)
<i>Additional information - Circularity initiatives</i>	Describe any significant examples of circularity initiatives in the production process related to the supplied products
<i>Additional information - Decarbonization initiatives</i>	Describe any examples of significant decarbonization initiatives and/or energy efficiency in the production process related to the supplied products

Requests for additional information are transversal and identical for all types of products

Example of key questions from the survey – GHG Emissions

PARAMETER	DESCRIPTION
GHG Emissions - LCA and EPD	Indicate whether you have a product LCA (Life Cycle Assessment) analysis and/or a product EPD (Environmental Product Declaration) compliant with ISO 14025 standard (type III)
GHG Emissions - Product LCA	Specify for which products you have the LCA analysis
GHG Emissions - LCA type	Specify the type of LCA analysis carried out (<i>Screening LCA</i> o <i>Detailed LCA</i>)
GHG Emissions - LCA carbon footprint	Provide the CO ₂ e footprint per unit of product (kg CO ₂ e/kg)
GHG Emissions - LCA link	Insert the link to the LCA analysis and any additional information, if available
GHG Emissions - Product EPD	Specify for which products the EPD analysis is available
GHG Emissions - LCA module EPD	Specify the LCA module considered (e.g., A1-A3 Cradle-to-Gate)
GHG Emissions - EPD carbon footprint	Provide the CO ₂ e footprint per unit of product (kg CO ₂ e/kg) reported in the EPD
GHG Emissions - EPD link	Insert the link to the EPD and any additional information, if available

The GHG emission requirements are transversal and identical for all types of products

Instructions for completion (1/2)

For the Meter commodity cluster, please follow the instructions in the Compilation Guide found in the specific survey you have received.

1

Select the **belonging cluster** based on the **products** that your company has provided to the Hera Group in **2025**.

*For more heterogeneous clusters, please consult the **Commodity Groups – Cluster Association Tables** in the Appendix to this Document to verify the belonging cluster of the supply*

2

For **clusters** that include **detailed sections on products**, select the **specific product (ref. Slide 23-25)**. In case of a composed supply **more products**, **select all products** subject to supply in the year 2025.

3

Fill out the specific questions related to the **main materials** indicated in each detailed section:

- Indicate the **quantities of material** and the related **percentages** of **biological and recycled/reused material/component** (where present)
- For the **biological material from a certified sustainable supply chain**, indicate the **certification** adopted and attach it if available
- Use the questions “**Other material**” to add any other materials not included in the detailed questions

4

Fill in the **cross-sectional questions** related to packaging, additional information, and GHG emissions
Upload the **available certifications as an attachment** in the dedicated spaces.

5

Submit the completed survey by clicking on “**Invia risposta**”.

In case of doubts or questions, use the email box accesso.portalefornitori@gruppohera.it.

Instructions for completion (2/2)

For the Meter commodity cluster, please follow the instructions in the Compilation Guide found in the specific survey.



Compilation rules

- 1 Indicate the **quantities of products, materials, and packaging in kilograms (kg)**, rounding to the **nearest whole number**, without including decimals or commas, periods, and separators
- 2 In the case of **percentages**, indicate the **whole numerical value corresponding to the percentage** (e.g., write "10" to indicate 10%), rounding to the nearest whole number if necessary
- 3 In case of **a not applicable response**, enter **"0"** in the numerical fields and **"Not applicable"** in the text fields
- 4 Enter the **contact information of the compiler** (First Name, Last Name, Email, Phone Number) for any **clarification requests** from the Hera Group

Exclusions

Excluded from reporting:

- Materials and products supplied directly by Gruppo Hera
- Fuels and biofuels used for energy purposes and for product transport activities
- Materials and fuels used in the production process of products
- "Returnable" packaging withdrawn by the supplier

Cluster, sections, and main materials mapped (1/3)

Commodity Cluster	Product detail sections		Main materials mapped	
FUELS	<ul style="list-style-type: none"> • Diesel+ • Diesel • HVO • Methane 	<ul style="list-style-type: none"> • Methane CNG • Methane LNG • Gasoline • LPG 	<ul style="list-style-type: none"> • Diesel+ • Diesel • HVO • Methane 	<ul style="list-style-type: none"> • Methane CNG • Methane LNG • Gasoline • LPG
WASTE CONTAINERS	<ul style="list-style-type: none"> • Large bins and bell-shaped containers • Containers • Recycling islands 	<ul style="list-style-type: none"> • Containers up to 360 L (including bins) • Bags 	<ul style="list-style-type: none"> • Steel • Plastic materials 	
ELECTRICAL / ELECTRONIC MATERIAL *	<ul style="list-style-type: none"> • Electrical / electronic material 		<ul style="list-style-type: none"> • Plastic materials • Rubber • Steel • Aluminum • Copper 	<ul style="list-style-type: none"> • Lead • Glass • Silicon • Mineral and ester oils
CONSTRUCTION MATERIALS *	<ul style="list-style-type: none"> • Construction materials 		<ul style="list-style-type: none"> • Bituminous conglomerates • Cement • Cement mix and geomix • Aggregates 	<ul style="list-style-type: none"> • Recycled fill stone from demolition • Steel • Plastic materials

* For more heterogeneous clusters, please consult the **Commodity Groups – Cluster Association Tables** in the Appendix to this Document to verify the belonging cluster of the supply

Cluster, sections and main mapped materials (2/3)

Commodity Cluster	Product detail sections		Main materials mapped
CHEMICAL PRODUCTS	<ul style="list-style-type: none"> • Hydrochloric acid • Peracetic acid • Sulfuric acid • Sodium aluminate base • Sodium bicarbonate • Hydrated lime • Activated carbon • Ferric chloride • Ferrous chloride • Coag. aluminum-based • Compressed gases – Oxygen – Acetylene – Nitrogen – Air • Pure and certified gases for laboratories 	<ul style="list-style-type: none"> • Sodium hypochlorite • Lime-carbon mixture • Odorant – neutralizer • Liquid oxygen for treatment plants • Polyelectrolyte • Heavy metal reagent • Caustic soda • Sodium chlorite • Ammoniacal solutions • Urea • Other chemical products or materials chem. laboratory 	<ul style="list-style-type: none"> • Selected chemical product
SPARE PARTS AND COMPONENTS FOR PLANTS *	<ul style="list-style-type: none"> • Spare parts and components for plants 		<ul style="list-style-type: none"> • Plastic materials • Steel • Aluminum • Brass

* For more heterogeneous clusters, please consult the **Commodity Groups – Cluster Association Tables** in the Appendix to this Document to verify the belonging cluster of the supply

Cluster, sections, and main mapped materials (3/3)

Commodity Cluster	Product detail sections		Main materials mapped	
PIPES, FITTINGS, VALVES, PUMPS AND ACCESSORIES *	<ul style="list-style-type: none"> • PVC Pipes Sewage • PVC Pipes Water • PE Pipes Water • PE Multilayer Pipes Water • PE Pipes Gas • Steel Pipes coated in PE Water 	<ul style="list-style-type: none"> • Steel Pipes coated in PE Gas • Cast Iron Pipes Water • District heating Pipes • Other pipes • Fittings, valves, and accessories • Pumps 	<ul style="list-style-type: none"> • Plastic materials • Rubber • Steel • Cast Iron • Copper • Brass 	<ul style="list-style-type: none"> • Bronze • Aluminum
METERS	<ul style="list-style-type: none"> • Water meters • Gas meters • Electric meters • TLR meters 	<div> <i>Separate ad hoc survey for product code</i> </div>	<ul style="list-style-type: none"> • Plastic materials • Rubber • Steel • Aluminum 	<ul style="list-style-type: none"> • Brass • Bronze • Copper • Cast Iron

* For more heterogeneous clusters, please consult the **Commodity Groups – Cluster Association Tables** in the Appendix to this Document to verify the belonging cluster of the supply

Agenda

- Hera Group – Adoption of CSRD
- Key definitions
- Compilation Guide
- **FAQ and support**
- Appendix - Tables of Association for Commodity Groups - Clusters

FAQ (1/2)

1. Will I receive multiple surveys if my company supplies various products?

No, you will be sent a single tailored survey, organized into sections based on product or merchandise categories.

2. Does the survey on resource use and circularity replace other surveys or specific requests from the Hera Group (such as during qualification or bidding)?

No, this survey is supplementary to other requests made by the Hera Group.

3. If my company already publishes a sustainability report or holds certifications, scores, or ESG ratings from third-party providers, is the survey still required?

Yes, the survey is specifically designed to collect information needed by the Hera Group for its supplies.

4. What should be taken into account regarding the packaging category?

Packaging items that are 'returnable' should be excluded from reporting as resource flows entering the Hera Group.

5. For supplies ordered in 2024 but delivered in 2025, is completing the survey necessary?

Yes, all supplies delivered in 2025 must be reported. For KPI calculations, the supply date when it passed through the Hera Group should be considered.

6. Are service and work suppliers expected to complete the survey?

The survey you receive focuses solely on goods supply. If you are unsure about your supply's classification, please contact accesso.portalefornitori@gruppohera.it for clarification.

FAQ (2/2)

7. How many surveys must be completed for supplies to various companies within the Hera Group?

There is only a single survey which is applicable for the following Hera Group companies: Hera Spa, Inrete Distribuzione Energia, Heratech, HerAcquaModena, Herambiente, Frullo Energia Ambiente, Herambiente Servizi Industriali, ACR Reggiani, HestAmbiente, Uniflotte, AcegasApsAmga, Hera Servizi Energia, Hera Luce, Hera Comm, Estenergy, Fratelli Franchini, Marche Multiservizi, and Herabit.

8. Who holds responsibility for the accuracy of the information submitted in the survey?

It is stated: "The supplier bears full responsibility for the accuracy of the data and information provided in response to the survey questions. Hera Group reserves the right to perform additional verifications to confirm the accuracy of the submitted data and information. It is advisable to keep documentation or evidence supporting the information shared. All collected data will be handled confidentially. Only aggregated or categorized data by macro-type will be included in the Sustainability Declaration."

9. Is a submission receipt provided after completing the survey?

No, the system does not issue a receipt upon submission. Instead, a confirmation message appears on the screen, but no email notification is sent.

10. Can modifications be made after completing the survey?

Yes, changes can be made before the deadline. You may log in again, update the survey as needed, and resubmit the revised version.

Support mailbox

For any questions, clarification requests, or additional information



accesso.portalefornitori@gruppohera.it

The answers to the received questions will be returned in aggregated form as FAQs, using the communication channels of the Hera portal

Agenda

- Hera Group – Adoption of CSRD
- Key definitions
- Compilation Guide
- FAQ and support
- **Appendix - Tables of Association for Commodity Groups - Clusters**

Cluster Materiale elettrico/elettronico

Electrical/electronic material cluster

CODICE GM	DESCRIZIONE GM
FCCU0016	B STAZIONI DI RICARICA AUTO ELETTRICHE
FIHW0006	B COMPUTER - ACCESSORI
FIHW0007	B HARDWARE
FIHW0009	B LETTORI OTTICI
FIHW0011	B PERSONAL COMPUTERS / STAMPANTI ACQUISTO
FIHW0012	B PLOTTER - ACQUISTO E RICAMBI
FIHW0026	B TONER-CARTUCCE-NASTRI PER STAMPANTI E FOTOCOPIATRICI
FITE0004	B AUTOMAZ. INDUSTRIALE - ACQUISTO E INSTALLAZIONE
FITE0018	B SISTEMI RIL. PRESENZE/CONTROLLO ACCESSI
FITE0024	B TESSERE MAGNETICHE RICONOSCIM./BUSTE RIGIDE
FITE0027	B TELEMISURA E TELECONTROLLO IMPIANTI
FITL0015	B RADIO RICETRASMITTENTI - ACQ. E RICAMBI
FITL0016	B RADIOTRASMETTITORI DATI
FITL0019	B TELECOMUNIC.-IMPIANTI-APPARATI (DECODER, MODEM, ROUTER, ECC.)
FITL0020	B TELECOMUNICAZIONI-TUBI E RACCORDI IN POLIETILENE E PVC
FITL0022	B TELEFONI CELLULARI -ACQUISTO E RICAMBI
FITL0023	B TELEFONI E APPARECCH. TELEF. FISSE -ACQUISTO
FITL0025	B TLC-ACCESSORI STRUMENTI E ATTREZZ. PER FIBRE OTTICHE
FRFE0002	B INTERRUTTORI ELETTRICI B.T.
FRFE0004	B CAVI ELETTRICI M.T.

CODICE GM	DESCRIZIONE GM
FRFE0005	B GIUNTI E TERMINALI PER CAVI MT/AT
FRFE0007	B ACCUMULATORI PER STRUMENTAZIONI
FRFE0009	B APPAREC. E MAT. ELETTRONICI (NO STRUM. MISURA E CONTROLLO)
FRFE0032	B ENERGIA ELETTRICA - CABINE PREFABBRICATE
FRFE0049	B IMPIANTI E PANNELLI FOTOVOLTAICI - ACQUISTO E RICAMBI
FRFE0053	B MATERIALE ELETTRICO
FRFE0061	B MOTORI ELETTRICI - ACQUISTO E RICAMBI
FRFE0085	B STABILIZZATORI E REGOLATORI DI TENSIONE
FRFE0113	B INTERRUTTORI ELETTRICI M.T E A.T
FRFE0114	B QUADRI ELETTRICI BT-MT-AT DI COMANDO E CONTROLLO
FRFE0116	B CAVI ELETTRICI B.T.
FRFE0118	B TRASFORMATORI DI POTENZA AT/MT/BT
FRFE0119	B TRASFORMATORI DI MISURA
FRFE0169	B ARMADI PER IMP. ELETTRICI E FIBRE OTTICHE
FRFE0172	B ENERGIA ELETTRICA - ACCESSORI SPECIFICI IMPIANTI AEREI
FRGE0042	B GRUPPI DI CONTINUITA' ACQUISTO/RICAMBI
FRGE0126	B GRUPPI ELETTROGENI ACQUISTO/RICAMBI
FRGR0127	B GRUPPI FRIGORIFERI A COMPRESSIONE
FRGR0128	B GRUPPI FRIGORIFERI AD ASSORBIMENTO

Cluster Materiali da costruzione

Construction Materials Cluster

<i>CODICE GM</i>	<i>DESCRIZIONE GM</i>
FCED0007	B CALCE - GESSO - CEMENTO
FCED0035	B MANUFATTI IN CEMENTO
FCPC0053	B SABBIA QUARZIFERA E SILICEA
FMIA0039	B MATERIALE COPERT. DISCARICHE (TERRA, MATTONI, INERTI DA DEM)
FMIA0065	B TUBO PER DRENAGGIO BIOGAS E CAPTAZ/DREN. PERCOLATO
FMIA0071	B EDILIZIA - TESSUTO GEOTESSILE
FMIA0086	B REFRATTARIO SAGOMATO E INFORME
FMIA0087	B SABBIA, GHIAIA, INERTI (COSTRUZIONE DISCARICHE)
FMIA0093	B TELONE COPRI DISCARICA
FMRM0016	B CIPPATO PER BIOFILTRO-ACQUISTO
FMRM0053	B RETE A MAGLIA IN POLIETILENE PER DISCARICHE

Cluster Ricambi e componenti per impianti (1/2)

Spare Parts and components for plants Cluster (1/2)

CODICE GM	DESCRIZIONE GM
FCAS0027	B IMP. PRODUZ. E DOSAGGIO PRODOTTI CHIMICI
FIME0001	B RICAMBI CALDAIE - BRUCIATORI
FIME0002	B COMPONENTI IMPIANTI IDRO-TERMICI-CONDIZIONAMENTO-SOLARI
FIME0003	B RICAMBI CONDIZIONAMENTO CLIMATIZZAZIONE
FIME0004	B COMPONENTI E ACCESSORI IMPIANTI DI REGOLAZIONE TERMOREGOLA
FIME0006	B COMPONENTI PER FUMISTERIA
FIME0007	B RICAMBI PER IMPIANTI DI TRATTAMENTO ARIA - FILTRI
FLAA0014	B CONTENITORI PER MAGAZZINO E INDUSTRIALI (COMPRESI PALLET)
FLCR0008	B CALDAIE PER RISCALDAMENTO
FLCR0013	B CONDIZIONATORI
FLCR0019	B IMPIANTI CONDIZ. E RISCALD. (FORNITURE CON POSA)
FLMS0005	B ASCENSORI
FLMS0006	B ATTREZZ. DI SOLLEVAMENTO (NO CARRIPONTE)
FLMS0010	B CARRELLI ELEVATORI E TRASPORT.
FLMS0011	B CARRIPONTE
FLMS0017	B FUNI DI ACCIAIO, METALLICHE, PLASTICHE
FMIA0004	B SISTEMI DI CONDENSAZIONE A VAPORE (TORRI)
FMIA0005	B ADDENSATORI FANGHI - IMPIANTI

CODICE GM	DESCRIZIONE GM
FMIA0006	B AERATORI SOMMERSI IMP. DEPURAZIONE
FMIA0009	B ATTREZZATURA PER COMPOST
FMIA0011	B BILANCE E PESE
FMIA0012	B BRUCIATORI PER IMP. INCENERIMENTO
FMIA0018	B IMPIANTI DI DEODORIZZAZIONE
FMIA0024	B IMP. DEPUR.: APPARATI SEPARAZ.(LIQUIDI/SOLIDI)
FMIA0025	B IMP. DI DEPURAZIONE PREFABBRICATI
FMIA0040	B MISCELATORI
FMIA0055	B RICAMBI ORIGINALI IMP. TERMOVALOR.-MAT. MECC. E SPECIFICI
FMIA0060	B SISTEMI DI MISURA E ANALISI FUMI
FMIA0061	B TECNOLOGIE PER IMPIANTI DI TERMOVALORIZZ. A LETTO FLUIDO
FMIA0062	B TELECAMERE TERMOGRAFICHE
FMIA0064	B TRITURAZ./SELEZ. RIFIUTI - MACCHINARI
FMIA0072	B GENERATORI DI VAPORE PER WTE
FMIA0074	B GRIGLIE PER WTE
FMIA0075	B IMPIANTI DI DEPURAZIONE FUMI
FMIA0090	B IDROGENO, FORNITURA E MANUTENZIONE IMPIANTI E ATTREZZATURE
FMIA0091	B SISTEMI ED APPARECCHIATURE A.T. (PROD.NE ENERGIA)

Cluster Ricambi e componenti per impianti (2/2)

Cluster Spare Parts and Components for Plants (2/2)

CODICE GM	DESCRIZIONE GM
FMIA0092	B TECNOLOGIE IMPIANTO BIOGAS
FMIA0095	B TURBINE
FMIA0096	B TURBOGENERATORI A GAS
FMIA0097	B TURBOGENERATORI A VAPORE
FMIA0098	B NASTRI-COCLEE PER TRASPORTO E SOLLEVAMENTO
FMOL0026	B IMPIANTI ARIA COMPRESSA
FMOL0032	B IMPIANTI DI TRATTAMENTO ARIA
FMOL0033	B IMPIANTI OLEODINAMICI
FMOL0034	B IMPIANTI PNEUMATICI
FMPO0001	B TURBOESPANSORE E COMPONENTI
FMRM0050	B PRESSA RIFIUTI - ACQUISTO
FMRM0054	B RETE CAPTAZIONE BIOGAS - MATERIALI ACCESSORI
FRIP0012	B ARMATURE STRADALI - PROIETTORI - ARREDI ILLUM. PUBBLICA
FRIP0046	B ILLUMINAZ. PUBBLICA-REGOLATORI CORRENTE
FRIP0047	B ILLUMINAZIONE - ARREDI
FRIP0050	B IMPIANTI SEMAFORICI - ACQUISTO E RICAMBI
FRIP0065	B PALI
FRPC0069	B PROTEZ. CATOD. - ALIMENTATORI
FRPC0070	B PROTEZ. CATOD. - DISPOSITIVI E ACCESSORI
FRPC0071	B PROTEZ. CATOD. - ARMADI, CASSETTE

CODICE GM	DESCRIZIONE GM
FRPC0072	B PROTEZ. CATOD.-DISPERSORI E MAT. VARI-FORN. E POSA
FRRIO041	B GRUPPI DI RIDUZIONE-RICAMBI E MINUTERIA
FRRIO062	B MOTORIDUTTORI
FRRIO125	B SISTEMI DI CONTROLLO DELLA PRESSIONE E ACCESSORI
FRRIO141	B REGOLATORI E DISPOSITIVI DI CONTROLLO PRESSIONE PER GAS
FRRIO142	B SCAMBIATORI CALORE E ACCESSORI
FRTR0059	B MODULI DI COGENERAZIONE - ACQUISTO
FRTR0084	B SISTEMI DI SCAMBIO TERMICO PER TLR (PACKAGE)
XCFC0003	B CASSETTE IN ZINCO PER SALME - ACQUISTO
XCFC0004	B CIPPI FUNEBRI - ACQUISTO
XCFC0005	B COFANI FUNEBRI ACCESSORI - URNE CINERARIE - ACQUISTO
XCFC0006	B COFANI FUNEBRI-ACQUISTO
XCFC0011	B SACCHI IN PVC PER ESUMAZIONI E RIF.ORGANICI CIMITERIALI
XCFC0012	B URNE CINERARIE

Cluster Tubazioni, raccordi, valvole, pompe e accessori (1/2)

Cluster Pipes, fittings, valves, pumps and accessories (1/2)

CODICE GM	DESCRIZIONE GM
FRFE0017	B DISPOSITIVI DI CORONAMENTO/CHIUSURA (BOTOLE-CHIUSINI)
FRRA0021	B COLLARI PRESA
FRRA0022	B COLLARI RIPARAZ. IN ACCIAIO INOX
FRRA0023	B COLLETTORI/BATTERIE PER CONTATORI
FRRA0024	B COMPENSATORI E GIUNTI DI DILATAZIONE IN GOMMA/TESSUTO
FRRA0025	B COMPENSATORI DI DILATAZIONE IN ACCIAIO
FRRA0034	B FASCE, MANICOTTI TERMORESTRINGENTI E A FREDDO
FRRA0038	B FLANGE IN ACCIAIO
FRRA0067	B PEZZI SPECIALI IN ACCIAIO
FRRA0074	B RACCORDI IN PVC
FRRA0075	B RACCORDI E PEZZI IN GHISA
FRRA0076	B RACCORDI IN OTTONE
FRRA0122	B RACCORDI IN ACCIAIO
FRRA0123	B GIUNTI DIELETTRICI
FRRA0124	B GIUNTI UNIVERSALI
FRRA0132	B RACCORDI IN GHISA MALLEABILE ZINCATA
FRRA0133	B RACCORDI SALDABILI IN PE O A STRINGERE IN MAT. PLASTICO
FRRA0134	B RACCORDI PER POLIETILENE IN OTTONE
FRRA0135	B RACCORDI ANTISFILAMENTO IN GHISA PER TUBI PE/PVC
FRRA0137	B RACCORDI FLESSIBILI PER CONTATORI GAS

CODICE GM	DESCRIZIONE GM
FRRA0138	B RACCORDI IN GHISA SFEROIDALE PER ACQUA
FRRA0139	B GIUNTI/RACCORDI DI TRANSIZIONE POLIETILENE/ACCIAIO
FRRI0140	B RIDUTTORI DI PRESSIONE PER ACQUA
FRTR0144	B Tubi, raccordi, valvole e materiale accessorio - Reti TLR
FRTU0039	B ARTICOLI IDRAULICI (MINUTERIA E PICCOLA RICAMBISTICA)
FRTU0146	B TUBO ACCIAIO GREZZO, VERNICIATO O ZINCATO PER GAS E ACQUA
FRTU0147	B TUBO ACCIAIO INOX GAS E ACQUA POTABILE
FRTU0148	B TUBO ACCIAIO RIVESTITO PER ACQUA E/O GAS
FRTU0149	B TUBO ACCIAIO RIV. PER GAS
FRTU0150	B TUBO ACCIAIO ZINCATO
FRTU0151	B TUBO GHISA SFEROIDALE
FRTU0154	B TUBO IN PEAD PER FOGNATURA
FRTU0155	B TUBO IN PVC PER FOGNATURE
FRTU0156	B TUBO POLIETILENE PER ACQUA E/O GAS
FRTU0157	B TUBO IN POLIETILENE MULTISTRATO
FRTU0158	B TUBO PVC PER ACQUEDOTTO
FRTU1000	B SOLO PER SQ: TUBO POLIETILENE
FRTU1001	B SOLO PER SQ: TUBI E RACCORDI
FRVA0001	B VALV. DI REGOLAZIONE E BLOCCO IMP. PRIMARI

Cluster Tubazioni, raccordi, valvole, pompe e accessori (2/2)

Cluster Pipes, fittings, valves, pumps and accessories (2/2)

CODICE GM	DESCRIZIONE GM
FRVA0006	B ACCESSORI PER VALVOLE
FRVA0013	B ASTE DI MANOVRA PER VALVOLE
FRVA0015	B ATTUATORI, SERVOMOTORI E VALVOLE
FRVA0031	B ELETTROVALVOLE
FRVA0096	B VALVOLE A FARFALLA IN GHISA PER ACQUA
FRVA0097	B VALV. A FLUSSO AVVIATO PER INTERCETTAZIONE
FRVA0098	B VALVOLE A GALLEGGIANTE
FRVA0099	B VALV. A GHIGLIOTTINA IN GHISA
FRVA0100	B VALV. A SARACINESCA IN ACCIAIO PER ACQUA
FRVA0101	B VALVOLE A SFERA FLANGIATE A LEVA PER ACQUA
FRVA0102	B VALV. A SFERA FLANG. IN ACC. PER GAS
FRVA0103	B VALVOLE AUTOMATICHE E PILOTATE
FRVA0104	B VALV. DI SICUREZZA A MOLLA
FRVA0105	B VALVOLE A GLOBO
FRVA0106	B VALVOLE A SARACINESCA IN GHISA
FRVA0108	B VALVOLE DI RITEGNO
FRVA0109	B VALVOLE DI SFIORO
FRVA0110	B VALVOLE PER IMPIANTI PRIMARI
FRVA0111	B VALVOLE PNEUMATICHE A MANICOTTO "PIC"
FRVA0112	B VALVOLE TERMOREGOLATRICI

CODICE GM	DESCRIZIONE GM
FRVA0159	B VALVOLE A SARACINESCA IN GHISA E ACCESSORI
FRVA0160	B VALV. A FARF. IN ACC. FLANG. PER ACQUA
FRVA0161	B VALVOLE A FARFALLA IN ACCIAIO FLANGIATE PER GAS
FRVA0162	B VALVOLE A FARFALLA 'WAFFER' IN GHISA PER GAS
FRVA0163	B VALVOLE A SFERA IN ACCIAIO FLANGIATE/A SILDARE PER GAS
FRVA0164	B VALVOLE A SFERA IN OTTONE FILETTATE PER ACQUA POTABILE
FRVA0165	B VALV. A SFERA OTTONE PER CONT. GAS
FRVA0166	B VALV. A SFERA OTTONE PRESA ACQUA
FRVA0167	B VALVOLE A SFERA IN OTTONE PER GAS E ACCESSORI
FMPO0041	B MOTOPOMPE
FMPO0044	B POMPE DI DRENAGGIO ED AUTOADESCANTI
FMPO0045	B POMPE MONOVITE
FMPO0046	B POMPE PER FANGHI
FMPO0047	B POMPE PER VUOTO E ROTATIVE
FMPO0048	B POMPE PERISTALTICHE
FMPO0066	B VENTILATORI E ASPIRATORI
FMPO0067	B COMPRESSORI
FMPO0081	B POMPE CENTRIFUGHE
FMPO0083	B POMPE DOSATRICI E TRAVASO PER REAGENTI
FMPO0084	B POMPE SOMMERGIBILI

Thank you for your cooperation!!!